

CELL RETURN PACKAGING

Returning HP & UHP Cells

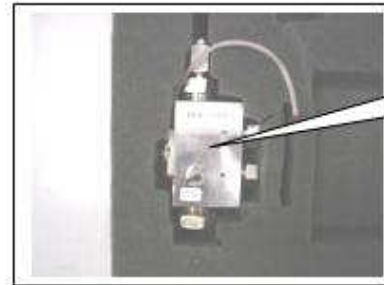


Wrong Way

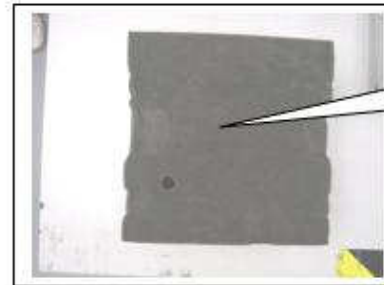


NOT packaged correctly – loose allowing cell movement and potential damage during transport

Right Way



Packaged correctly and tightly to hold cell in place during transport.



Final packaging top layer added to secure and protect imbedded cell.



The entire foam packaging is secured and placed in a box for transport.

Returning Industrial & Natural Gas Cells



Wrong Way



NOT packaged correctly. No cap, not secured in bubble wrap, allowing element to contact foam during transport causing a broken element.

Right Way



To secure cell, wrap element in bubble wrap.



Place bubble wrapped cell in a box with a sufficient amount of packing peanuts to prevent damage to cell.

Returning Industrial APZ / APRZ Cells



Wrong Way



NOT packaged correctly. No cap, not secured in bubble wrap, allowing element to contact foam during transport causing a broken element.

Right Way



Packaged correctly and tightly to secure battery and harness in place. DO NOT connect to cell.



Place cell in foam cutout to secure for transport.



Final packaging top layer added to secure and protect cell.